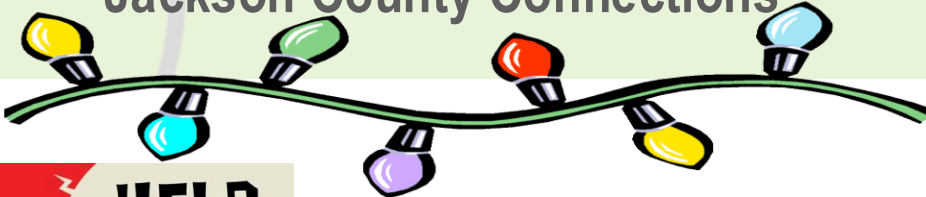




# 4-H Family News

DECEMBER 2024

Jackson County Connections



## Large Animal Co-Superintendents Needed

We have open positions for the Jackson County 4-H Beef, Swine and Sweepstakes Co- Superintendents. If you are interested, please follow the links below for the superintendent job description and the application.

Applications will be accepted through December 31<sup>st</sup>.

[Jackson County 4-H Superintendent Job Description](#)

[Jackson County 4-H Superintendent Job Application](#)

### CONTACT US

Hayley Wineland  
[winela11@msu.edu](mailto:winela11@msu.edu)  
4-H Program Coordinator

Jessica Waldron  
[waldro45@msu.edu](mailto:waldro45@msu.edu)  
4-H Program Assistant

Gerilyn Darnell  
[darnel37@msu.edu](mailto:darnel37@msu.edu)  
Support Staff

### PHONE & EMAIL:

(517) 788-4292

[msue.Jackson@county.msu.edu](mailto:msue.Jackson@county.msu.edu)

### WEBSITE:

<https://www.canr.msu.edu/jackson/4-h/>



## Stay Connected

\* Jackson County 4-H Facebook Page:

<https://www.facebook.com/jacksoncounty4h>

\* Jackson Co. 4-H Small Animal Assoc. Facebook Page:

<https://www.facebook.com/JacksonCountySmallAnimal>

\* Jackson County 4-H Livestock Assoc. Facebook Page:

<https://www.facebook.com/JacksonCountyLargeAnimal>

\* Jackson County Horse Council Facebook Group:

<https://www.facebook.com/groups/232601997473213>

MSU is an affirmative-action, equal-opportunity employer, committed to achieving excellence through a diverse workforce and inclusive culture that encourages all people to reach their full potential. Michigan State University Extension programs and materials are open to all without regard to race, color, national origin, gender, gender identity, religion, age, height, weight, disability, political beliefs, sexual orientation, marital status, family status or veteran status. Issued in furtherance of MSU Extension work, acts of May 8 and June 30, 1914, in cooperation with the U.S. Department of Agriculture. Quentin Tyler, Director, MSU Extension, East Lansing, MI 48824. This information is for educational purposes only. Reference to commercial products or trade names does not imply endorsement by MSU Extension or bias against those not mentioned.



# COUNTY CALENDAR OF EVENTS



## December Meetings

Monday 2: Foundation via Zoom at 6:30pm

Monday 9: Horse Council Meeting at 7pm

## January Meetings

Tuesday 7<sup>th</sup>: Cloverbud

\*See flyer for details

Thursday 9<sup>th</sup>: Pocket Pets

\*See flyer for details

Monday 13<sup>th</sup>: Horse Council Meeting at 7pm

Tuesday 14<sup>th</sup>: Small Animal Meeting at 7pm

Wednesday 15<sup>th</sup>: Large Animal Meeting at 7pm

Wednesday 22<sup>nd</sup>: Small Animal Expectations at 6:30pm

Monday 27<sup>th</sup>: Youth Council at 6pm

MSU Extension Office

1715 Lansing Ave Ste #257

Jackson, MI 49202

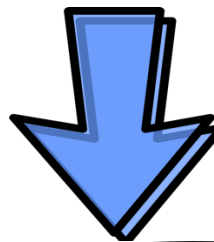
**MSU Extension Office  
will be closed on the  
following days:**

**November 28<sup>th</sup>**

**November 29<sup>th</sup>**

**December 2<sup>nd</sup>**

**December 24<sup>th</sup>-Jan 1<sup>st</sup>**



### SMALL ANIMAL EXPECTATIONS MEETING:

Each small animal species superintendent will go through their expectations packets. Youth and families will learn what is expected to raise and show this specie and can ask questions!!



# JACKSON COUNTY 4-H WELDING WORKSHOP

Jackson County 4-H members join us for morning of fun, creativity, & an introduction to the process of Gas Metal Arc Welding. During this class, you will learn about the welding safety, machine set-up & practices. You will complete the class by welding a customized 4-H clover sculpture. All supplies & safety gear are provided.

**WHEN:** January 25th

**TIME:** 10AM-12PM

**WHERE:** The Workshop  
3241 County Farm Rd,  
Jackson, MI 49201

**COST:** \$45

\*Due at registration

**REGISTER AT:**

<https://theworkshop.coursetorm.com/course/jackson-county-4-h-welding-workshop1>

**DEADLINE TO REGISTER**  
January 18th

For Questions, Contact  
Jessica Waldron at  
WALDRO45@MSU.EDU

# JACKSON COUNTY 4-H CLOVERBUDS

JOIN THE FUN!!

- \*JANUARY 7TH - DREAM CATCHER
- \*FEBRUARY 4TH - CANVAS PAINTING
- \*MARCH 4TH - CHEF CLOVERBUD
  - \*APRIL 1ST- COUNCIL NIGHT
- \*MAY 6TH - DAHLEM CENTER
- \*JUNE 3RD- GARDENING

OPEN TO ALL JACKSON COUNTY 4-H MEMBERS 5-7 YRS OLD FOR MORE INFO PLEASE CONTACT JESSICA WALDRON AT 517-788-4292 OR WALDRO45@MSU.EDU

ALL ACTIVIES ARE FROM 6-7:30PM COST \$7 PER ACTIVITY MSU EXTENSION OFFICE 1715 LANSING AVE STE 257 JACKSON, MI 49202



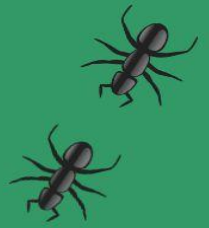
REGISTER AT:  
WALDRO45@MSU.EDU  
BY THE FRIDAY  
BEFORE EACH CLASS

MSU is an affirmative-action, equal-opportunity employer, committed to achieving excellence through a diverse workforce and inclusive culture that encourages all people to reach their full potential. Michigan State University Extension programs and materials are open to all without regard to race, color, national origin, gender, gender identity, religion, age, height, weight, disability, political beliefs, sexual orientation, marital status, family status or veteran status. Issued in furtherance of MSU Extension work, acts of May 8 and June 30, 1914, in cooperation with the U.S. Department of Agriculture. Quentin Tyler, Director, MSU Extension, East Lansing, MI 48824. This information is for educational purposes only. Reference to commercial products or trade names does not imply endorsement by MSU Extension or bias against those not mentioned.

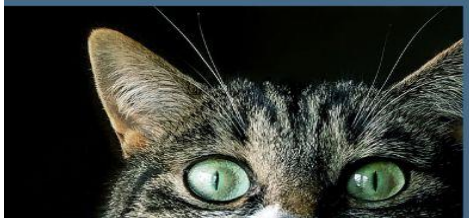




# JACKSON COUNTY 4-H POCKET PETS & CATS



If you have a bird, a reptile, a cat, an ant farm, a gerbil or any other holdable pocket pet, then this is the club for you! Through hands on activities and special guest speakers you'll learn all about your pocket pet's needs, develop skills to keep them healthy, explore different careers in this field and you'll even get to show your pet at the Jackson Co. Fair.



## MEETING DATES:

- \*Jan 9th \*Feb 13th
- \*Mar 13th \*Apr 10th
- \*May 8th \*June 12th

## TIME:

6:00pm -7:30pm

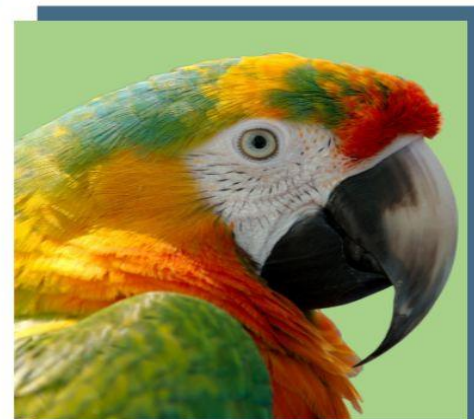
## MSU EXTENSION OFFICE

1715 LANSING AVE  
STE 257  
JACKSON, MI 49202



**SIGN UP AT**  
WALDR045@MSU.EDU  
**FOR MORE INFORMATION CONTACT**

Jessica Waldron  
at 517-788-4292



MSU is an affirmative-action, equal-opportunity employer, committed to achieving excellence through a diverse workforce and inclusive culture that encourages all people to reach their full potential. Michigan State University Extension programs and materials are open to all without regard to race, color, national origin, gender, gender identity, religion, age, height, weight, disability, political beliefs, sexual orientation, marital status, family status or veteran status. Issued in furtherance of MSU Extension work, acts of May 8 and June 30, 1914, in cooperation with the U.S. Department of Agriculture. Quentin Tyler, Director, MSU Extension, East Lansing, MI 48824. This information is for educational purposes only. Reference to commercial products or trade names does not imply endorsement by MSU Extension or bias against those not mentioned.

# Birth Management for Sheep and Goats 2025

- Would you like to improve the birth management of your herd or flock? The MSU Small Ruminant Extension team is offering a 4-part webinar series on birth management and separate workshop that will blend applied science and years of practical experience on a comprehensive set of topics that will help you improve your birth management skills. **Participants will learn preventative approaches, assessment skills, and treatment procedures.** Both novice and veteran producers alike will find this program valuable. Because of the amount and depth of information presented, participants have found attending this program more than once to be useful.
- Each weekly 2-hour session allows time to ask questions and will be recorded for future viewing. In addition, there will be a final, 4-h hands-on session held at the MSU sheep teaching and research center in East Lansing, MI. This final session is a workshop that focuses on practical skills related to birth management. You can attend the virtual sessions without attending the face-to-face session if you prefer.
- **Virtual sessions.** Each session will feature seminars, specialized instructional videos, and question & answer sessions with an expert panel to cover each of these topics (live sessions are 7-9 pm each Wednesday evening with each session recorded, including questions & answer components):
  - ✓ **Jan 2 (Thursday):** *"Nutritional management to optimize birth outcomes in sheep and goats."*
  - ✓ **Jan 8 (Wednesday):** *"Optimizing maternal and newborn health: parasite control, vaccination schedules, treating complications at birth, providing a healthy environment."*
  - ✓ **Jan 15 (Wednesday):** *"The normal birth process, birth assistance and newborn care."*
  - ✓ **Jan 22 (Wednesday):** *"Identifying challenges on your farm and creating an improvement plan addressing health management, nutrition and facility improvements."*
- **Birth management workshop at MSU sheep teaching and research center.**
  - ✓ **Jan. 25, noon-4 pm:** Hands-on demonstrations of newborn care and processing, bonding management, ultrasound diagnosis of pregnancy and diagnosis of newborn mortality. This is a supplemental workshop to demonstrate procedures used in birth management. The demonstration material presented in the workshop will also be covered in the virtual sessions. Please register for this event as a stand-alone item below. Warm drinks and light snacks will be available.
- **Instructors:** Richard Ehrhardt Ph.D., Senior Extension Specialist; Mike Metzger M.S., Extension educator; Barbara Makela, Research technician and Erin Recktenwald Ph.D., Research associate
- **Webinar registration (ends Sunday Dec. 29):** \$40/farm or family and includes supplemental educational materials including a 90+ page bound compendium/resource manual and a laminated newborn hypothermia/starvation treatment poster as well as access to all recorded sessions (additional members of the same farm/ family may receive additional manuals and posters for \$20 per set). All supplemental materials will be mailed right after the first session (participants from outside the USA will need to pay extra postage). Contact Mike Metzger for more details (phone: 517-788-4292; email: [metzgerm@msu.edu](mailto:metzgerm@msu.edu)). **Late registration** (after Dec. 29): \$60/farm.
- **Jan 25 Workshop Registration (ends Sunday Jan 12):** \$10/person

Registration is online only, and it may be completed at:

<https://events.anr.msu.edu/smallruminantbirthmanagement/>

**MICHIGAN STATE**  
UNIVERSITY

**Extension**



# 2024 - 2025 Pesticide Classes

## 2024-2025 Pesticide Training and RUP Testing Sites



MSU Extension, MDARD PPPMD, and MSU Pesticide Safety Education Program are offering in-person Core Manual review classes followed by Core pesticide applicator certification testing. Fumigation and Aerial Standard tests will also be available.

PRIVATE CORE, FUMIGATION STANDARD, AERIAL STANDARD AND COMMERCIAL CORE TESTS ONLY. NO COMMERCIAL CATEGORY TESTS.

**ATTENDANCE FOR THE CORE REVIEW IS MANDATORY TO PARTICIPATE IN THE IN-PERSON TESTING. REFUNDS OR DEFERRING TO OTHER LOCATIONS ARE ALLOWED ONLY UNDER CERTAIN CONDITIONS.**

The 4-hour review covers the chapters of the National Pesticide Applicators Certification Core Manual. The review is held in the morning and the MDARD exams are given that afternoon. We recommend participants read and study the Core Manual before attending the review. Copies may be ordered from: <https://npsecstore.com/pages/michigan>. County Extension offices may also have copies available. Please call ahead for availability.

**TIME:**

- 8 a.m. Check-in
- 8:30 a.m. to 12:30 Core review class
- 12:30 Lunch is provided
- 1:00 p.m. MDARD testing session

**REVIEW CLASS COST:** Fee for the Core review class is \$25.00. Payable to Michigan State University or MSU.

**MDARD TESTING COST:** Fee for applicator certification is paid to the STATE OF MICHIGAN. Commercial Applicator certification fee is \$75.00, Private Applicator fee is \$50.00 and Registered Applicator fee is \$45.00. Military Veterans Private applicator certification fees are waived if a copy of their DD214 is provided.

A check payable to "State of Michigan" is the only payment accepted for the applicator certification fee. **Cash or credit card payments are not accepted.** MDARD will provide a Postage paid envelopes to send certification payment. **MDARD will NOT accept payment the day of the session**

MSU is an affirmative-action, equal-opportunity employer, committed to achieving excellence through a diverse workforce and inclusive culture that encourages all people to reach their full potential. Michigan State University Extension programs and materials are open to all without regard to race, color, national origin, gender, gender identity, religion, age, height, weight, disability, political beliefs, sexual orientation, marital status, family status or veteran status. Persons with disabilities have the right to request and receive reasonable accommodations.



## 2025 Regional Crop and Pest Management Updates

Learn about the latest recommendations for managing weeds, diseases, insects and nematodes from MSU Extension educators and specialists.

**Jan 10—Bad Axe, Franklin Inn**  
Contact Huron County MSU Extension Office at 989-269-9949

**Jan 15—Ithaca, Gratiot Isabella RESD**  
Contact Isabella County Extension at 989-317-4079

**Feb 5—Dowagiac, Dowagiac Conservation Club**  
Contact the St Joseph MSU Extension Office at 269-467-5511

**Feb 7—Frankenmuth, SVREC**  
Contact Saginaw County Extension Office at 989-907-6520

**Feb 11—Alpena, Alpena Community College**  
Contact Isabella County Extension Office at 989-317-4079

**Feb 20—Hillsdale, Hillsdale ISD**  
Contact Jackson County Extension Office at 517-788-4292

Thanks to the support from our partners



MSU is an affirmative-action, equal-opportunity employer, committed to achieving excellence through a diverse workforce and inclusive culture that encourages all people to reach their full potential. Michigan State University Extension programs and materials are open to all without regard to race, color, national origin, gender, gender identity, religion, age, height, weight, disability, political beliefs, sexual orientation, marital status, family status or veteran status.

For more information and to register visit <https://events.anr.msu.edu/2025CropPestUpdate/> or scan the QR code



Registration is \$40 and includes lunch and the 2025 Weed Control Guide for Field Crops

RUP and CCA credits will be available at each meeting.





# STATEWIDE CALENDAR OF EVENTS

## Shop the Michigan 4-H store this holiday season



Buy your favorite Michigan 4-H apparel, drinkware, and essentials at the SHOP 4-H Online Store!

Offered in collaboration with National 4-H Council through Shop 4-H, the Michigan 4-H store offers Michigan 4-H branded apparel and other gifts. Visit the store online and find the perfect item for your favorite 4-H'er, volunteer, alumni, professional or fan! The shop is open to the public and a percentage of all proceeds will be donated to Michigan 4-H.

To order Michigan 4-H specific items, visit <https://bit.ly/30pdNJw>. The store will remain open beyond the holiday season to continue offering Michigan 4-H branded gear to the Michigan 4-H community.

### November 29 – December 15: Fall TSC Paper Clover Campaign

*Local Tractor Supply Co.*

Support 4-H by purchasing a \$1 paper clover at your local Tractor Supply Co. (TSC) store!

[www.canr.msu.edu/events/tractor-supply-co-paper-clover-campaign](http://www.canr.msu.edu/events/tractor-supply-co-paper-clover-campaign)

### December 3: Giving Tuesday

*Online*

Join the #GivingTuesday movement — a global day of giving and a chance to celebrate the opportunities that makes 4-H so extraordinary. 4-H'ers are leading the way in a world full of change and together, we can build a generation ready for anything. We have set a goal to raise \$5,000 to grow 4-H county endowments in a 24-hour period.

<https://mi4hfdtn.org/giving-tuesday/>

### December 10: Wild Spartans – Forestry Fire Crew

*Online*

Join 4-H staff to spark excitement in the world of wildland fire. Meet Jennifer Hansen and Courtney Kubitskey, who are on the forestry fire crew with the Michigan Department of Natural Resources.

Learn about their work, and the education and career path they followed to get there. This free series is open to all youth ages 12-19 years. Pre-registration is required:

[www.canr.msu.edu/events/wild-spartans-monthly-wildlife-fisheries-webinar-series-december-2024-25](http://www.canr.msu.edu/events/wild-spartans-monthly-wildlife-fisheries-webinar-series-december-2024-25)

### December 17: Online Extension Extras - Helping Kids Manage Stress

*Online*

Children and youth experience stress; parents and caregivers have an opportunity to support them.

This workshop will cover common causes, signs and symptoms of stress, as well as discuss strategies for supporting children, youth and parents experiencing stress.

[www.canr.msu.edu/events/online-parenting-helping-kids-manage-stress-12-17-24](http://www.canr.msu.edu/events/online-parenting-helping-kids-manage-stress-12-17-24)

### Kettunen Center Inventory Closeout

Kettunen Center was the first 4-H volunteer and youth training center in the nation, owned and operated by the Michigan 4-H Foundation from 1961 to 2021. The center's remaining merchandise and furnishings is now available for sale through the MSU Surplus Store! We know the Kettunen Center meant so much to the 4-H community and this is an opportunity to purchase something by which to remember the center. Purchase yours today!







# STATEWIDE 4-H NEWS

## Help youth build the Five C's: Competence, confidence, connection, character and compassion

*Adapted from an article by Christine Heverly, MSU Extension*

Michigan 4-H works to ensure that youth are engaged in a positive youth development program and utilizes the 4-H Thriving Model to help illustrate how it is meeting the needs of youth across Michigan. A key component of the 4-H Thriving Model is that youth form developmental relationships. Young people thrive best when their families, friends, schools, neighbors, businesses and other community members support them in a variety of ways.

Positive relationships with volunteers provide young people with chances to learn life skills such as goal setting, problem-solving and communicating. Volunteers can help young people move through the developmental stages and address difficulties along the way. One important way volunteers can help youth thrive is to help them build their Five C's. According to "Liberty: Thriving and civic engagement among America's youth" by Richard Lerner, the Five C's are competence, confidence, connection, character and compassion.



The Five C's aren't tangible things you can give to young people. They're skills and characteristics young people develop through their experiences and relationships. According to Zarrett and Lerner, young people who are able to display stronger evidence of having the Five C's are considered to be thriving and more likely to be developmentally on target than those who do not. Volunteers have the potential to assist young people in building the Five C's by creating relationships and situations that allow them to thrive.

MSU Extension recommends the following ideas to help Michigan 4-H volunteers working with youth to help build the Five C's.

- Help youth learn new concepts for the projects or activities they are participating in.
- Know youth names and address them by their preferred names and pronouns.
- Have youth find their spark by trying something new.
- Help youth navigate obstacles that they encounter.
- Help youth work through the tough side of giving away a project (i.e., selling an animal, giving away a project they worked hard on).
- Help youth record progress, no matter how small; each completed task is a job well done (i.e., maintain a "Done It List").
- Identify values or ethical standards a youth lives by. Do this with them. Write a non-negotiables list showing beliefs the youth will not alter. This helps alleviate peer pressure break downs.
- Define confidence, competence, connection, character and compassion. Use one of these terms to define during a group meeting and discuss ways we show it. Align with the 4-H pledge and have youth brainstorm ways (or goals) to show these traits in the new 4-H year on paper. They can draw or write those ideas.
- Use simple ice breaker activities in pairs or small groups to help young people talk through or work on a common activity or topic. Have them share out loud to the larger group their shared connection or how they worked together to achieve a common goal (building competence and confidence, building connections).
- Focus on building relationship with the youth involved by really getting to know them (their hobbies, interests, events in school or family) and inquire about them with a genuine interest.
- Recognize specific positive behaviors or accomplishments in competence, confidence or character of youth in the club/group.
- Be compassionate in one's interactions with youth (and others) and serve as a role model in that behavior.